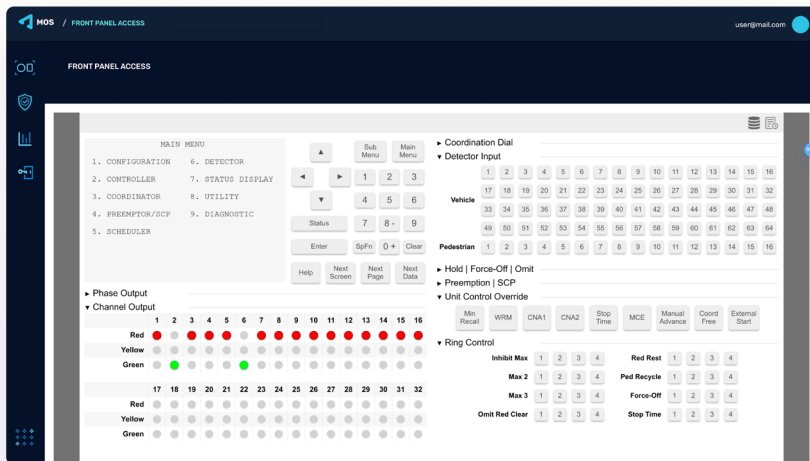


# notraffic™ Front Panel Access



NoTraffic's AI Mobility Platform enables remote access to the front panel of a Traffic Signal Controller (TSC), addressing the challenges associated with unconnected cabinets and eliminating the need for signal technicians to travel to the site to operate the TSC.

## Benefits

- 1 Designed for small-to-medium agencies needing remote access
- 2 Provides remote access to controller status and timing
- 3 Reduces operational costs by eliminating travel to the cabinet
- 4 Reduces time to address field issues, improving service levels

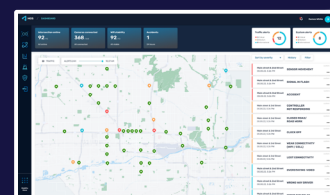
## Features

- Browser-based access via the Mobility OS cloud
- Secure, end-to-end double-encrypted connection
- Compatible with any signal controller that has a browser user interface

## AI Mobility Platform

The Front Panel Access application can be activated from the Mobility Store, that provides a diverse range of applications.

The Mobility Store is part of the NoTraffic AI Mobility Platform, which integrates AI-powered software and hardware at the edge under a cloud-based Mobility Operating System (MOS) to address current and future transportation needs.



Edge Devices  
& AI Detection

Mobility OS



NoTraffic  
Operations  
Center

Mobility  
Store